

Advanced Configuration for MusicMaster v0.78.2 or later written by (The Nekkid DJ)

This guide assumes that you already have MusicMaster (known forward as MM) configured per the Quick Start Guide, and MM is working and posting in your room.

If you plan on using Paltalk at the same time you are running MM it is recommend that you run MM on a seprate machine logged in with a dedicated nickname (can be a basic (black) nickname). If you are using the Greeter and Poster (MM Pro only) there is a lot text flowing in the room and it becomes troublesome to actually use Paltalk, although it can be done.

Commands

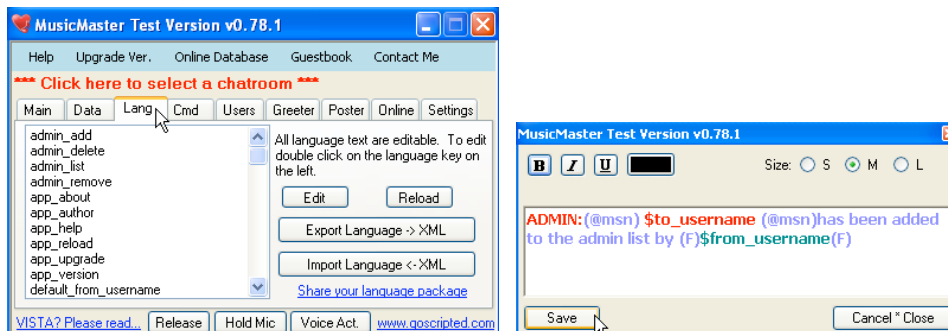
- Most of the built in commands should suffice for your needs, but if there is any reason you wish to alter a command for a given action, you can enter modified commands in the Cmd tab.



- You can enter a series of alternate commands by clicking on the command you wish to modify and entering the alternate commands you wish to use. For instance you can use shortcuts for commands ex. !abt or !a or any combination of letters. You can have multiple command by seperating each command with a comma ex about!, !abt, !a. For each command you need to click on "Save Commands" after you enter all the alternate commands. Not all commands are available to be changed, but most are. You will need to re-enter your commands on every upgrade until MM reaches an official released version.

Languages

- The text that is presented in the room can be modified to fit your needs. Most of the text uses variables to present information in the room as you will see while looking at the default language strings included with MM. You can access the Languages by clicking on Lang tab.



- The text controls are similar to those in Paltalk. You can have small, medium and large text in multiple colors and styles (bold, italics and underline). Paltalk has a limit on the amount of characters that you can post at a given time so the best practice is to type your text, select the whole line and make it one size, style and color. You can then go back and hilight various words and change their color. You can also add the text equivilants of emoticons. In the example above you can see the MSN symbol and Flower symbol. Also, you can see the example of variables used in the language strings. In this example, \$to_username is the name entered by an admin to add as an admin and \$from_username is the admin that issued the command. Once you have edited the language, click on the "Save" button.
- If you should happen to be on paltalk and issue a command that does not appear in the room, you should look at the machine that MM is running on and try it again. Most likely you will see an error that the text may be too long or contain illegal characters in which case you will need to adjust the language for that action to be shorter and contain less colors or styles. Following is a list of some variables used in the language files...

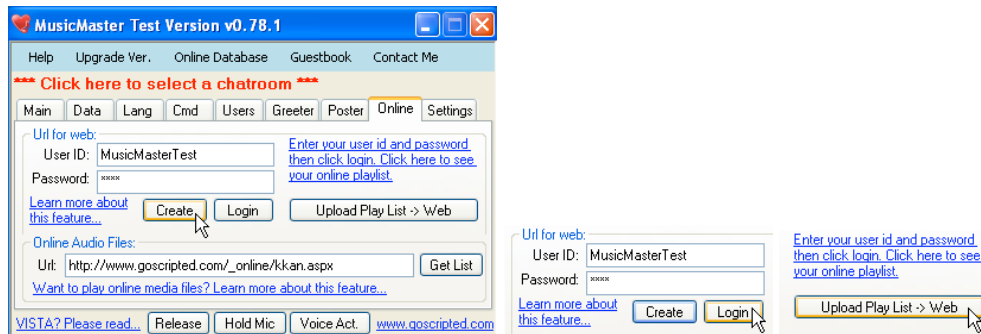
- ✓ \$nick, \$from_username - user's nickname.
- ✓ \$to_username – dedicating to a certain username or it can be target's username (eg: !admin_add Test) (\$nick refers to the person who is adding, and \$to_username is the person being added.)
- ✓ \$room – room's name
- ✓ \$total – total of the songs in the database
- ✓ \$total_reqs – total requests in request list

- ✓ \$list – any time it returns a list of text or anything
 - ✓ \$title – song's title
 - ✓ \$id – song's id.
 - ✓ \$duration, \$time – duration of a song
 - ✓ \$more - more pages
 - ✓ \$download - on (shows the download message define in the language text) off (returns empty)
 - ✓ \$link -> refers to a download link
- You should follow the examples in the default language files. Once you have your languages done, you should export your languages to a language file by clicking on the "Export Language -> XML" button. When you update to a new version of MM you can then use the "Import Language <- XML" button to reload your languages. You only then need to modify any new language settings from the updated MM.

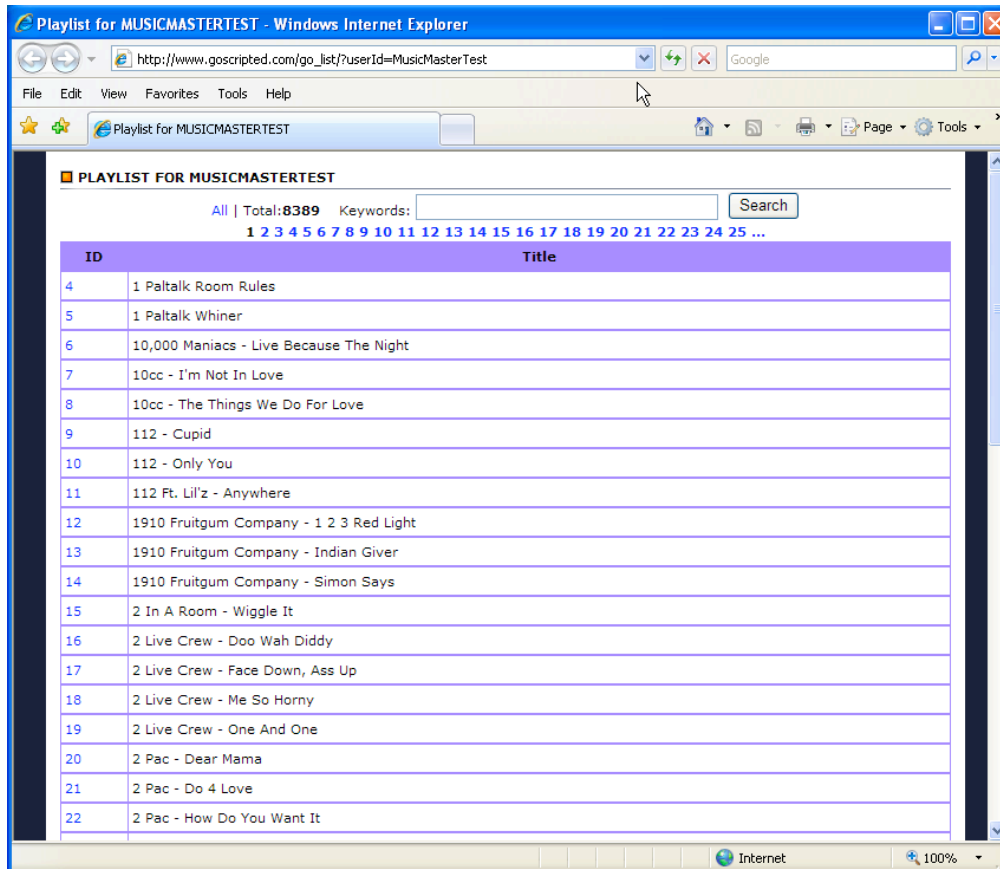


Online Music List Hosting

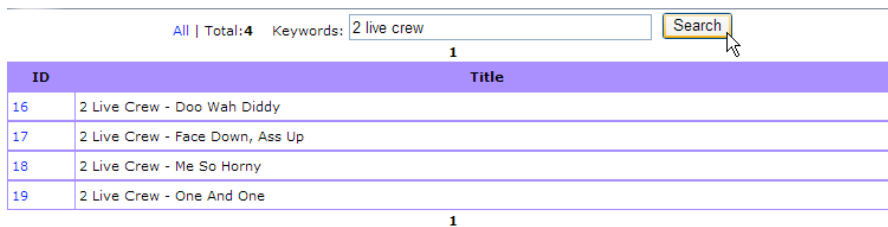
- Sometimes people would rather go to a web page to search for a song and get information. Goscripted provides this feature for you by having MM connect to www.goscripted.com and upload a list of your songs then formats it into a webpage with a search box. You can then put the URL to this page in your room banner or info for people to go look it. One thing you can also do is use a command like !time and add an alternate command to it like !list then in the language for that command put the URL to the website. Users could then type !time or !list to see the URL. To start using this feature click on the ONLINE tab. Enter a UserID (the name you wish to use in the URL for this page, which also shows up at the top of the page) and a password, then click on the "Create" button. Once successful, click on the "Login" button to connect to the website then click on the "Upload Play List -> Web" button.



- The URL for the room page is in the format http://www.goscripted.com/go_list/?userId=UserId where UserId is the UserID you used to create your list. You can also click on the link above the "Upload Play List -> Web" button to go to your page. The page looks like the following...



- Notice that at the top is a search box in which you can enter a keyword to search through the song list.



- From the Online tab you can also reference music files stored on a server on the internet. You can either reference the root directory where the files reside, or you can reference the location of an XML file that contains your song info. Enter the complete URL in the "Online Audio Files" URL box and click on Get List. There is more information about this feature at ...

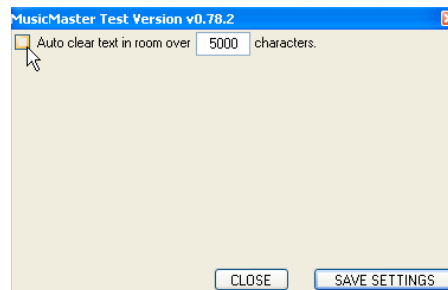
http://www.goscripted.com/a4c_forums/view.aspx?id=72&categoryId=14

Settings

- In the settings tab you can set many options for how MM operates. You can set how many requests Users/Admins/SuperAdmins may have and you can set how many songs are listed by the lfind command. You allow duplicates in the request list from anyone, not allow duplicates from any one person or not allow duplicates at all.

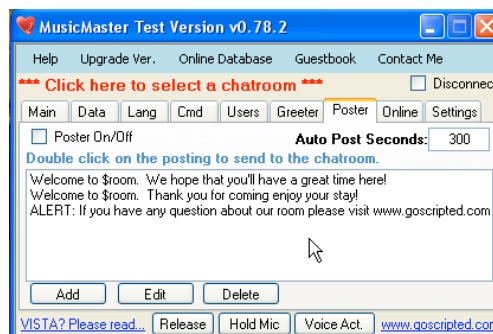


- MM has the ability to allow people to download songs from your playlist. This feature can be turned on and off with the "Allow download !dl <id>" setting. This setting can be turned on and off by using the !dl on and !dl off commands by a MM admin user in the room. Users may then use the !dl <Song ID> command to issue a song to be downloaded. MM will take this song and upload it to www.qoscripted.com then issue a link in the room that you may click on to get the webpage that allows you to download the song.
- MM has the ability to autoconnect to a room if the room should be closed, or paltalk servers go offline. This feature requires that you have the room owner nickname in your Paltalk buddy list and you enter that nickname in the settings area with the room admin code (only room admins can open a room if needed). When this feature is enabled MM will launch Paltalk, open the room and go into Voice Activated mode and start playing. This feature is only triggered if the "enabled" box is checked and MM attempts to post to the room. If MM is not playing songs at the time, then this feature will not be triggered UNLESS you have the MM Pro where the greeter and poster are active, in which case, as soon as the poster attempts to post to the room the reconnect will be triggered.
- Advanced settings allow you to activate the automatic room text clearing. This will keep Paltalk running better as it will use less memory to store the text buffer from the room.



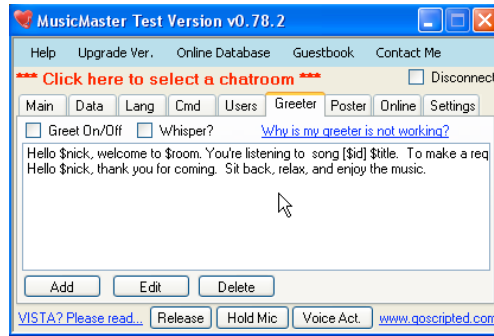
Poster (Only with MM Pro)

The poster has the ability to post items in the room on a regular timed schedule (default is 300 seconds). The poster can have multiple posts and at posts each item to the room sequentially. You can use the variable \$room as well as some other variables as shown in the Poster and Greeter examples.



Greeter (Only with MM Pro)

The greeter has the ability to greet each user as they enter the room. The greeting can be in the room itself, or sent to each entering user as a whisper. Currently Paltalk has an issue where multiple whispers can not be sent immediately after each other. This problem is being looked at now. Also, the user will not get the whisper if their privacy mode is on (unless they add the MM bot user to their buddy list). Variables can be used in the greeter as well as per the examples.



MusicMaster v0.78.2 Advanced Configuration Guide (04/02/09) @ www.goscripted.com