

Quick start for MusicMaster v0.78.2 or later written by (The Nekkid DJ)

- This assumes that you already have a Paltalk account (tested on Paltalk 9.5 and 9.6) and can successfully connect to a room and play music through your soundcard by using the direct recording mixer named differently depending on the soundcard manufacturer (StereoMix, Wave Out, What U Hear). Please note that these options may NOT be available with the built-in sound card of your PC since some manufactures have disabled this ability. If you need help setting up to play through the sound card, please try searching the internet for the words "Paltalk Audio Settings". Paltalk themselves have a page on it at...

<http://support.paltalk.com/SelectAudioDevice.html>

Introduction to MusicMaster

- Once you have a room set up and you are set up to play music via the soundcard, you can use MusicMaster (known forward as MM) to automate the ability for people in the room to find and request songs to be played. When there are no active songs in the request list, MM will play songs from the master library in the manner selected (either linear, random or via playlist). MM will post the name of the song in the room when it starts, and people in your room can bring up this information at any time, as well as see how many requests are waiting to play and the total time. When someone makes a request the request will be posted in the room with the total waiting time until the song is played.
- This document is designed to be a QUICK START guide to get MM up and running quickly. Other documents will cover features more in depth, and you can always go to...

http://www.goscripted.com/a4c_forums/category.aspx?id=14

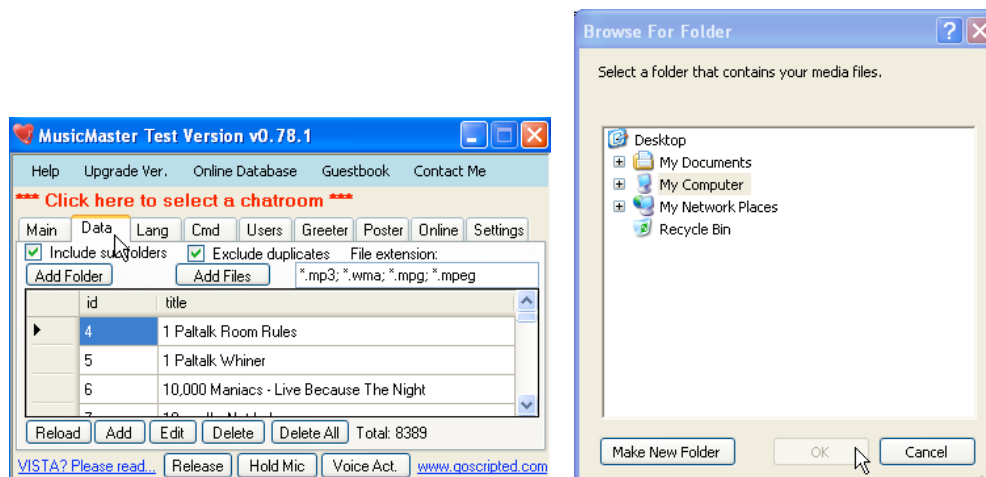
For online forum help. While all attempts are made to accurately cover the abilities of MM, the developer is constantly updating and improving the software, so this guide is meant as a starting point.

Using MusicMaster

- There are a few basic settings that you need to cover to get MM ready to play. You need to Add music to the database, add users that can control MM from the room and connect to the room. At the most basic level once completed MM is fully ready to use as is. You may want to further configure alternate commands and change the text shown in the room from the defaults.
- **If you are having issues with saving data to the database or file and are running Windows Vista with UAC (User Access Control), you will have to right click on the MusicMaster icon and "Run as Administrator".**

1. Adding Music to the Database (music stored locally on your computer).

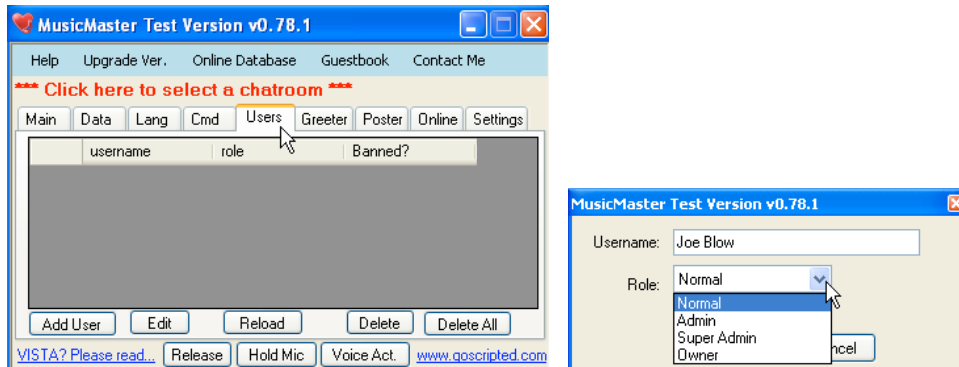
- The music should all be on one directory (although it doesn't need to be) and the names of the files should make some sort of sense. Often it is the artists name followed by the name of the song ex. Michael Jackson - Billie Jean. Although you can do this by hand, it can be tedious if you have a large library. Software like MP3TAG can automate the process for you.
- Once you have a directory of music (MP3, WMA, MPG, MPEG) you can click on Data tab of MM and then ADD FOLDER, select the folder containing your music and click on OK. MM will scan the folder and all subfolders and find and add music.



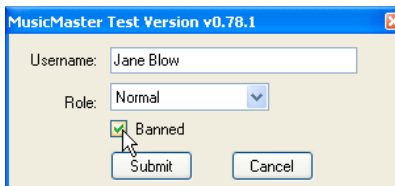
The music will appear in the list when finished. You can repeat the process if you have multiple folder on different hard drives, or locations.

2. Add Users

- You can now add users who are responsible for controlling MM from the room when you are not there. Click on the Users tab then click on Add User. When adding a user, type in their username and be careful of funny characters like 0 and O. Their username must match exactly what they use in the room. You then choose the type of user. The user types (Roles) match those that paltalk uses but they are not related to each other. For instance, you can give a normal user in the room admin, superadmin or owner privledges in MM.



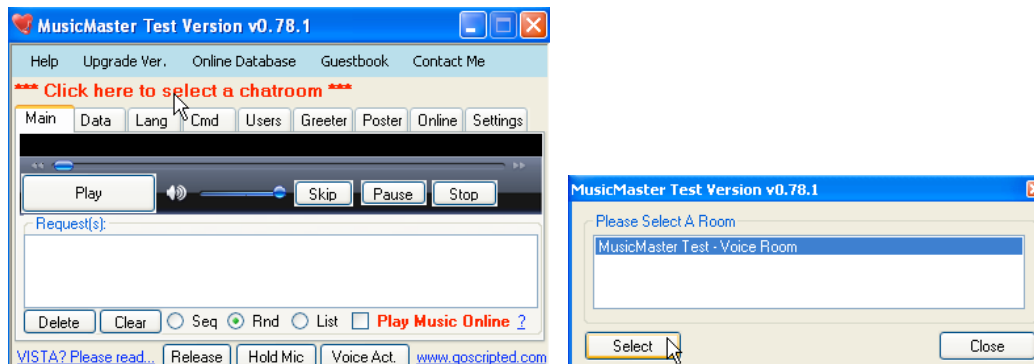
- It is also possible for you to BAN a user who abuses the use of MM by entering their username with a role of "Normal" then select the BAN checkbox and click on submit. The user will receive a message in the room that they are BANNED from using the software if they try to issue any commands in the room.



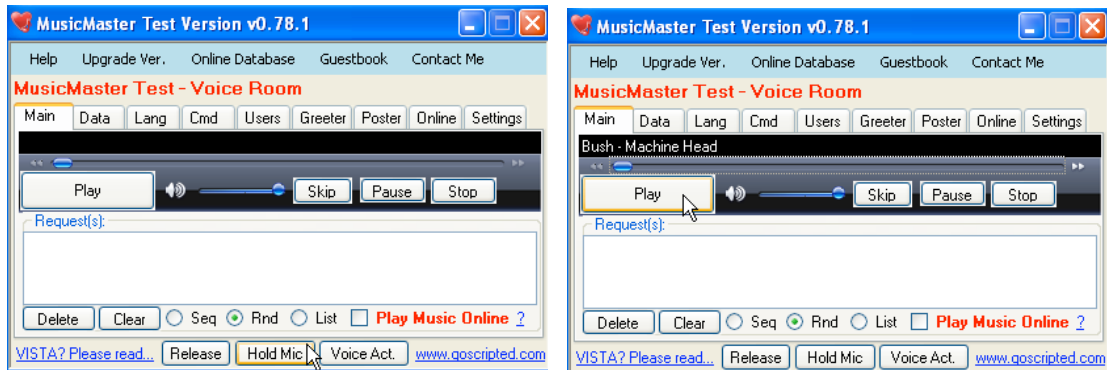
- The Roles start at Owner with the highest priviledge, then Super Admin, Admin and Normal. The role you assign to a user depends on what you would like them to be able to do. It would be safe to make the roles match the user roles in the room.

3. Connect to a room

- Once you are set up, load up Paltalk and open the room in which you would like MM to play music. You then need to "connect" MM to the room in order to be able to post text in the room and accept commands. Click on the red "CLICK HERE TO SELECT A CHATROOM" text at the top of the MM screen and select the room you wish to connect to from the list presented and click "Select"



- You are now ready to use MM with the default commands and text. To start MM playing, you must have the microphone using the HOLD MIC button at the bottom of the MM screen.



You can then start MM playing by click on the PLAY button. The name of the song will be posted in the room.

THATS IT! You are now running MM and your users can use various commands to find songs and add to the request list, as well as admins can use commands to change what MM is doing. The commands available are...

Any user can issue the following commands in the room. Replace <Song ID> with the actual song id number.

- ✓ !add <Song ID> - Adds song <Song ID> to the request list.
- ✓ !find <Keyword(s)> - Searches music database for <Keyword(s)>
- ✓ !more!/page# - If more than 5 songs are found, view more results or jump to page of results
- ✓ !check - Check what songs person has in request list and waiting times till played
- ✓ !status - Song ID and name of currently playing song
- ✓ !info <Song ID> - Information of <Song ID>
- ✓ !next - See what song is next to play
- ✓ !mark - Add currently playing song to persons favorite list (MM must be playing)
- ✓ !mark <Song ID> - Add <Song ID> to persons favorite list (MM must be playing)
- ✓ !mark_list - List persons favorites
- ✓ !mark_delete <Song ID> - Remove <Song ID> from persons favorite list
- ✓ !mark_reset - Reset persons favorite list
- ✓ !help - Shows helpful commands and URL to MM forums.

Admins can issue the additional commands in the room.

- ✓ !mic - Causes MM to hold the mic in the room.
- ✓ !unmic - Causes MM to release the mic in the room.
- ✓ !voice - Causes MM to put Mic into Voice Activate mode
- ✓ !play - Starts MM playing song at current location
- ✓ !play <Song ID> - Starts playing song <Song ID>
- ✓ !skip - Skips currently playing song
- ✓ !list_req - Shows current songs in request list
- ✓ !request_clear - Clears the request list
- ✓ !remove <Song ID> - remove song <Song ID> from request list

Super Admins can issue Admin commands and the additional commands in the room.

- ✓ !admin_add <Username> - add <Username> as Admin user in MM
- ✓ !admin_delete <Username> - remove <Username> as Admin user in MM
- ✓ !admin_list - List users with role "Admin"

Owners can issue Super Admin commands and the additional commands in room

- ✓ !superadmin_add <Username> - add <Username> as Super Admin user in MM
- ✓ !superadmin_delete <Username> - remove <Username> as Super Admin user in MM
- ✓ !superadmin_list - List users with role "Super Admin"

There are additional commands but that should be enough to get you started. More in depth guides will be created to help with customizing MusicMaster commands and Languages, as well as online features.